

Instituto Federal de Educação, Ciência e Tecnologia de Santa Catarina

Departamento Acadêmico de Eletrônica

Eletrônica Analógica I



# Análise de Circuitos com Diodos

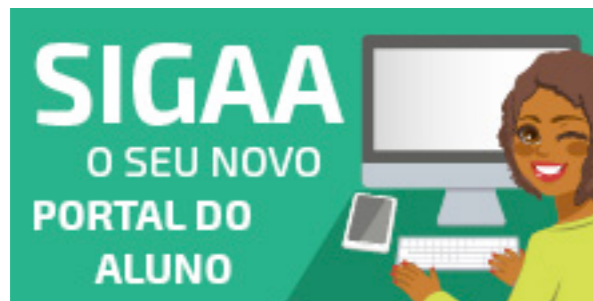
Prof. Clovis Antonio Petry.

Florianópolis, agosto de 2025.

# Eletrônica Analógica I

O material do curso está disponível em:

1. SIGAA para os alunos matriculados na disciplina;
2. Página do professor;
3. Canal no youtube do professor.



<https://sigaa.ifsc.edu.br>

ProfessorPetry  
Conhecimento para uma vida plena

PRINCIPAL PROJETO PUBLICAÇÕES CONTATO



**Bem vindo ao Website pessoal de Clovis Antonio Petry**

O objetivo desta página é a divulgação de informações sobre eletrônica, em especial eletrônica de potência. Todos os materiais disponibilizados podem ser livremente utilizados, desde que citados os autores. As disciplinas do semestre corrente podem ser acessadas clicando na imagem da esquerda abaixo. Material didático pode ser encontrado clicando na imagem da direita abaixo.



**Eventos**

**Outubro, 2020**  
**SNCT 2020**  
Semana Nacional de Ciência e Tecnologia 2020, Florianópolis, SC.  
[Acesse...](#)

**Setembro, 2020**  
**COBENGE 2020**  
XLVIII Congresso Brasileiro de Educação em Engenharia (COBENGE) e III Simpósio Internacional de Educação em Engenharia da ABENGE, Bento Gonçalves, RS. [Acesse...](#)

[www.ProfessorPetry.com.br](http://www.ProfessorPetry.com.br)



<https://www.youtube.com>

# Agenda

**Esta aula está organizada em:**


1. Características dos diodos;
2. Modelos representativos de diodos.
3. Análise de circuitos com diodos.



# Características dos diodos

As principais características (grandezas) são:


1. Corrente máxima direta ( $I_F$  ou  $I_o$ );
2. Tensão de ruptura reversa:
  - $V_{RRM}$  = Tensão de pico inverso repetitivo;
  - $V_{RWM}$  = Tensão de pico inverso de trabalho;
  - $V_R$  = Tensão de bloqueio CC.
3. Queda de tensão direta ( $V_F$ );
4. Corrente reversa máxima ( $I_R$ ).
5. Entre outras ....



[www.vishay.com](http://www.vishay.com)

**1N4148**  
Vishay Semiconductors

### Small Signal Fast Switching Diodes





**FEATURES**

- Silicon epitaxial planar diode
- Electrically equivalent diode: 1N914
- Material categorization: for definitions of compliance please see [www.vishay.com/doc?99912](http://www.vishay.com/doc?99912)





**APPLICATIONS**

- Extreme fast switches

**RoHS**  
COMPLIANT  
HALOGEN  
**FREE**

**LINKS TO ADDITIONAL RESOURCES**

**MECHANICAL DATA**

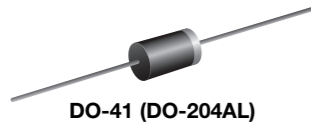
Case: DO-35 (DO-204AH)  
 Weight: approx. 105 mg  
 Cathode band color: black  
 Packaging codes / options:  
 TR/10K per 14" reel (52 mm tape), 50K/box  
 TAP/10K per ammpack (52 mm tape), 50K/box

<b>ABSOLUTE MAXIMUM RATINGS</b> ( $T_{amb} = 25\text{ }^{\circ}\text{C}$ , unless otherwise specified)				
PARAMETER	TEST CONDITION	SYMBOL	VALUE	UNIT
Repetitive peak reverse voltage		$V_{RRM}$	100	V
Reverse voltage		$V_R$	75	V
Peak forward surge current	$t_p = 1\text{ }\mu\text{s}$	$I_{FSM}$	2	A
Repetitive peak forward current		$I_{FRM}$	500	mA
Forward continuous current		$I_F$	300	mA
Average forward current	$V_R = 0$	$I_{F(AV)}$	150	mA
Power dissipation	$l = 4\text{ mm}, T_L = 45\text{ }^{\circ}\text{C}$	$P_{tot}$	440	mW
	$l = 4\text{ mm}, T_L \leq 25\text{ }^{\circ}\text{C}$	$P_{tot}$	500	mW

# Características dos diodos

**VISHAY** 1N4001, 1N4002, 1N4003, 1N4004, 1N4005, 1N4006, 1N4007  
www.vishay.com Vishay General Semiconductor

## General Purpose Plastic Rectifier



### FEATURES

- Low forward voltage drop
- Low leakage current
- High forward surge capability
- Solder dip 275 °C max. 10 s, per JESD 22-B106
- Material categorization: for definitions of compliance please see [www.vishay.com/doc?99912](http://www.vishay.com/doc?99912)



RoHS  
COMPLIANT

### TYPICAL APPLICATIONS

For use in general purpose rectification of power supplies, inverters, converters, and freewheeling diodes application.

### MECHANICAL DATA

**Case:** DO-41 (DO-204AL), molded epoxy body  
Molding compound meets UL 94 V-0 flammability rating  
Base P/N-E3 - RoHS-compliant, commercial grade

**Terminals:** matte tin plated leads, solderable per J-STD-002 and JESD 22-B102

E3 suffix meets JESD 201 class 1A whisker test

**Polarity:** color band denotes cathode end

PRIMARY CHARACTERISTICS	
$I_{F(AV)}$	1.0 A
$V_{RRM}$	50 V, 100 V, 200 V, 400 V, 600 V, 800 V, 1000 V
$I_{FSM}$ (8.3 ms sine-wave)	30 A
$I_{FSM}$ (square wave $t_p = 1$ ms)	45 A
$V_F$	1.1 V
$I_R$	5.0 $\mu$ A
$T_J$ max.	150 °C
Package	DO-41 (DO-204AL)
Circuit configuration	Single

MAXIMUM RATINGS ( $T_A = 25$ °C unless otherwise noted)									
PARAMETER	SYMBOL	1N4001	1N4002	1N4003	1N4004	1N4005	1N4006	1N4007	UNIT
Maximum repetitive peak reverse voltage	$V_{RRM}$	50	100	200	400	600	800	1000	V
Maximum RMS voltage	$V_{RMS}$	35	70	140	280	420	560	700	V
Maximum DC blocking voltage	$V_{DC}$	50	100	200	400	600	800	1000	V
Maximum average forward rectified current 0.375" (9.5 mm) lead length at $T_A = 75$ °C	$I_{F(AV)}$	1.0							A
Peak forward surge current 8.3 ms single half sine-wave superimposed on rated load	$I_{FSM}$	30							A
Non-repetitive peak forward surge current square waveform $T_A = 25$ °C (fig. 3)	$t_p = 1$ ms	45							A
	$t_p = 2$ ms	35							
	$t_p = 5$ ms	30							
Maximum full load reverse current, full cycle average 0.375" (9.5 mm) lead length $T_L = 75$ °C	$I_{R(AV)}$	30							$\mu$ A
Rating for fusing ( $t < 8.3$ ms)	$I^2t$ (1)	3.7							A <sup>2</sup> s
Operating junction and storage temperature range	$T_J, T_{STG}$	-50 to +150							°C

#### Note

(1) For device using on bridge rectifier application

onsemi

DATA SHEET

[www.onsemi.com](http://www.onsemi.com)

## Switch-mode Power Rectifiers

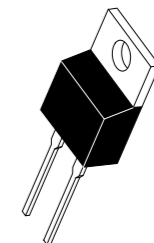
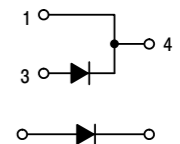
### MUR810G, MUR815G, MUR820G, MUR840G, MUR860G, MURF860G,

This series is designed for use in switching power supplies, inverters and as free wheeling diodes.

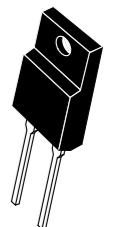
#### Features

- Ultrafast 25 and 50 Nanosecond Recovery Time
  - 175°C Operating Junction Temperature
  - Epoxy Meets UL 94 V-0 @ 0.125 in
  - Low Forward Voltage
  - Low Leakage Current
  - Reverse Voltage to 600 V
  - ESD Ratings:
    - ◆ Machine Model = C (> 400 V)
    - ◆ Human Body Model = 3B (> 16,000 V)
  - SURS Prefix for Automotive and Other Applications Requiring Unique Site and Control Change Requirements; AEC-Q101 Qualified and PPAP Capable
  - These Devices are Pb-Free and are RoHS Compliant\*
- #### Mechanical Characteristics:
- Case: Epoxy, Molded
  - Weight: 1.9 Grams (Approximately)
  - Finish: All External Surfaces Corrosion Resistant and Terminal Leads are Readily Solderable
  - Lead Temperature for Soldering Purposes: 260°C Max for 10 Seconds

## ULTRAFAST RECTIFIERS 8.0 AMPERES, 50-600 VOLTS

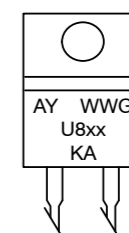


TO-220AC  
CASE 221B  
STYLE 1



TO-220 FULLPAK  
CASE 221AG  
STYLE 1

#### MARKING DIAGRAM



A = Assembly Location  
Y = Year  
WW = Work Week  
U8XX = Device Code  
xx = 05, 10, 15, 20, 40, or 60  
G = Pb-Free Package  
KA = Diode Polarity

#### ORDERING INFORMATION

See detailed ordering and shipping information in the package dimensions section on page 7 of this data sheet.

NOTE: Some of the device on this data sheet have been **DISCONTINUED**. Please refer to the table on page 7

# Características dos diodos



→ Diodos de potência

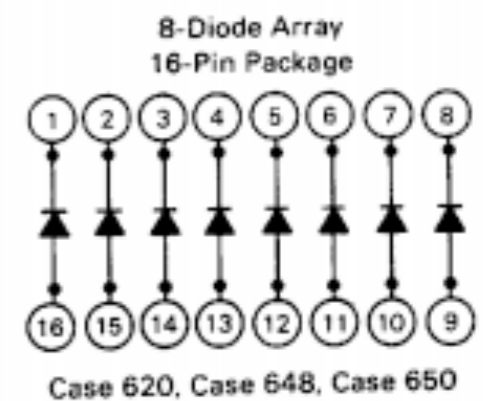
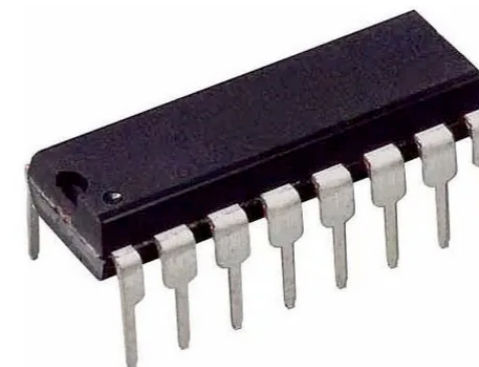


↓  
Diodo de sinal

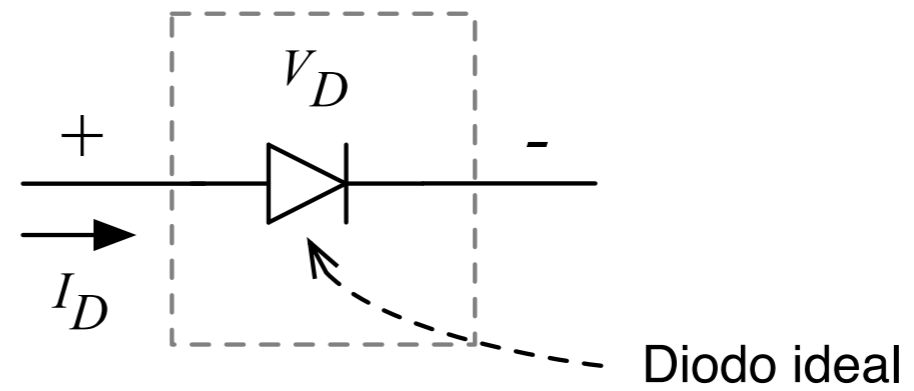
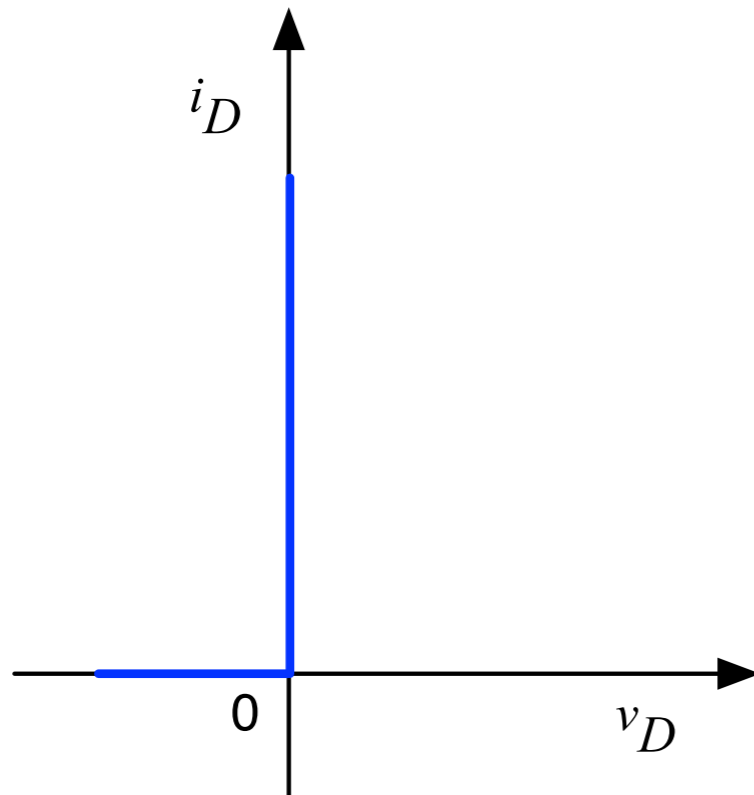
Circuitos integrados  
de diodos



→ Diodos de uso geral



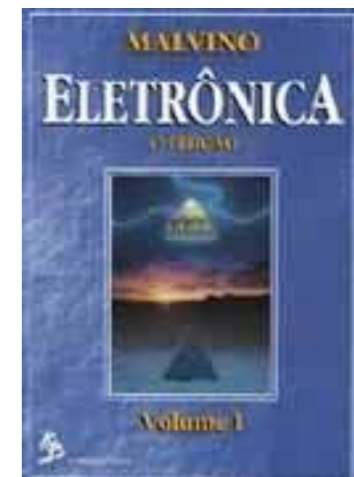
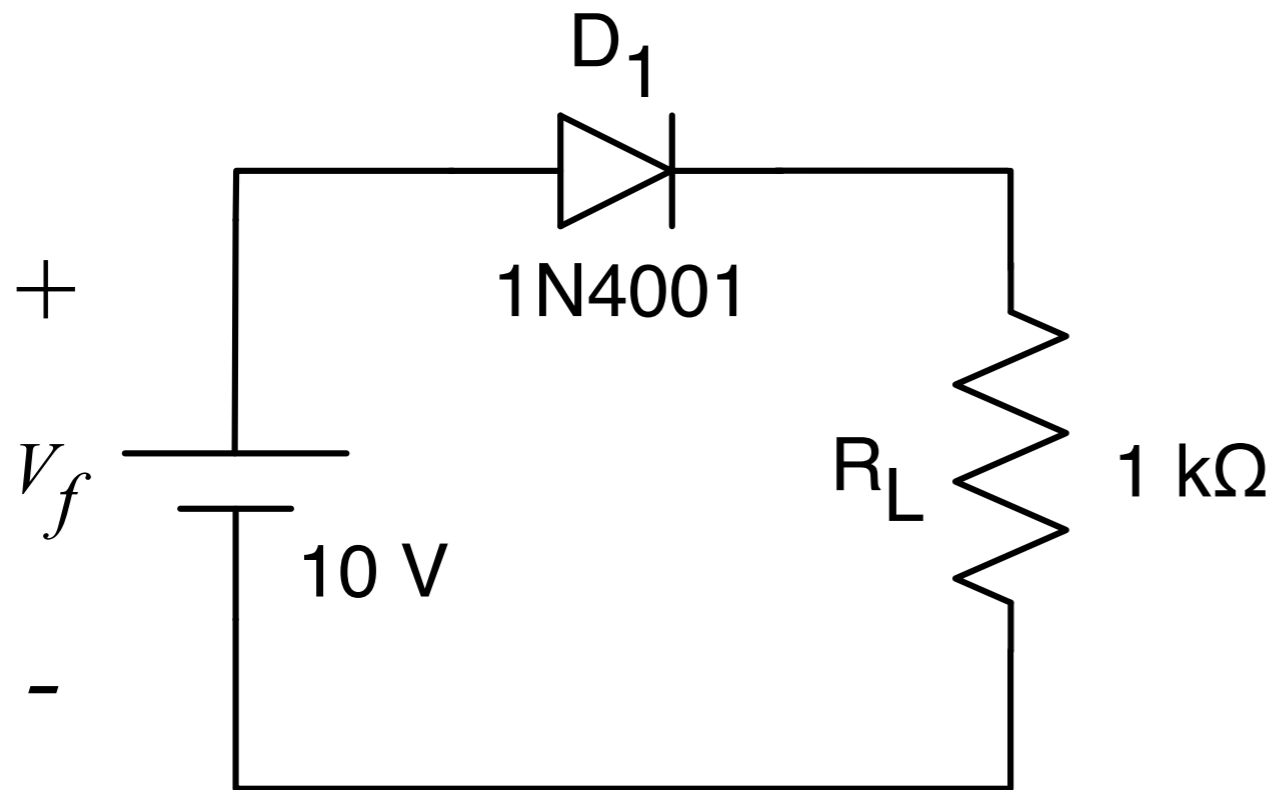
# Modelo ideal do diodo



# Modelo ideal do diodo

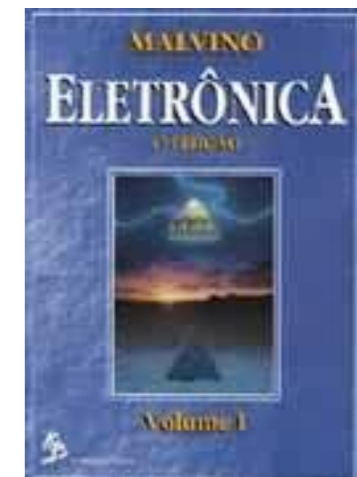
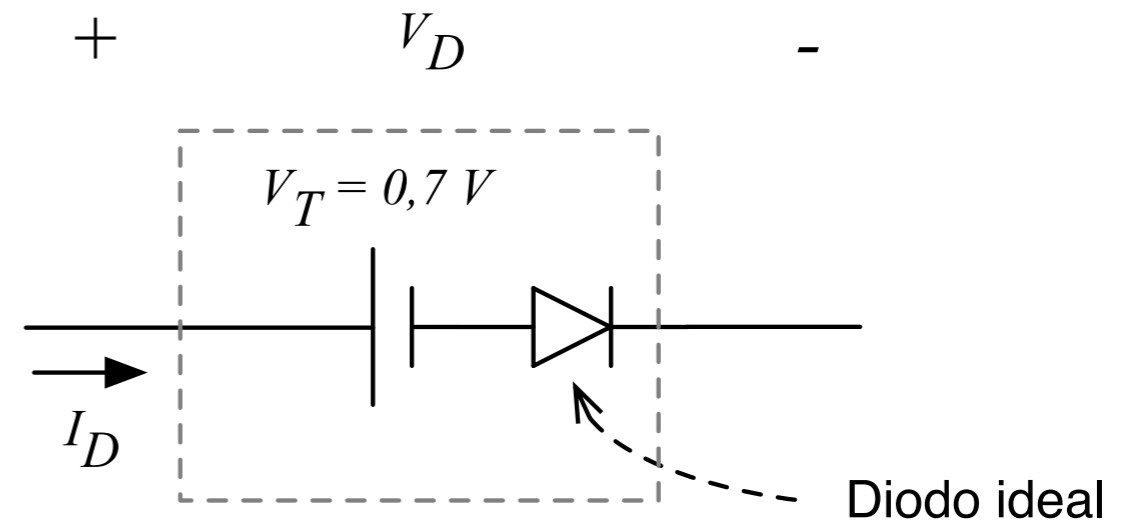
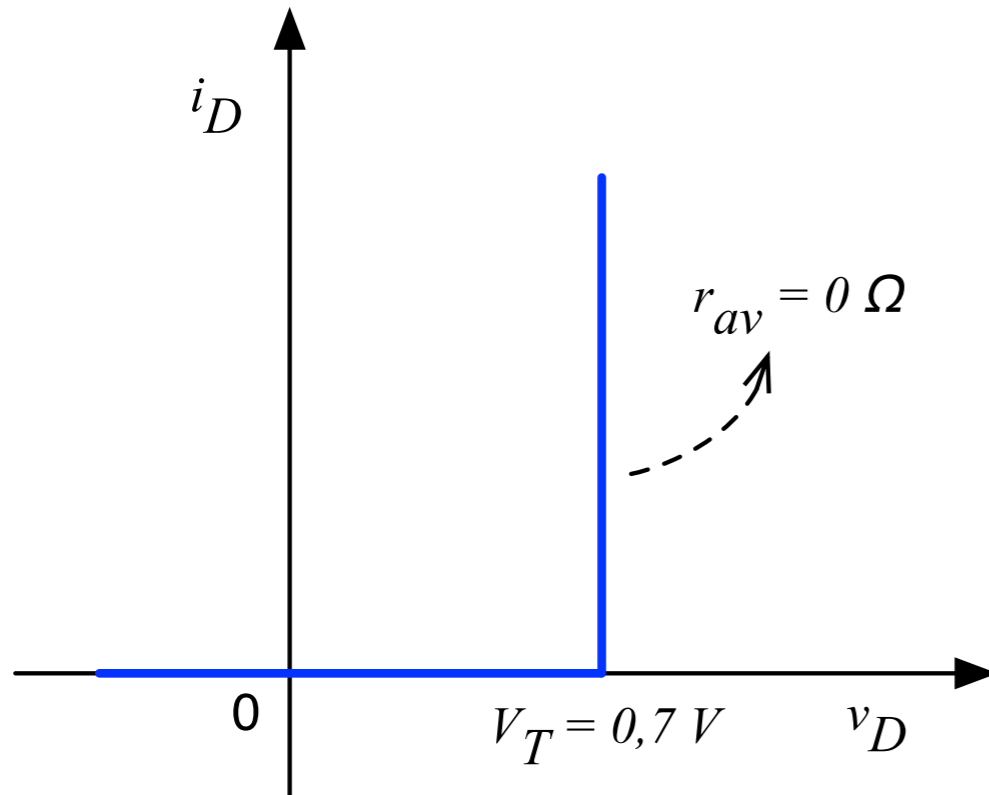
## Exemplo 3.4 - Eletrônica, vol. 1:

- Use a aproximação do diodo ideal para calcular a corrente de carga, a tensão na carga, a potência na carga, a potência no diodo e a potência total no circuito da figura abaixo.



Exemplo 3.4 do Malvino.

# Modelo simplificado do diodo

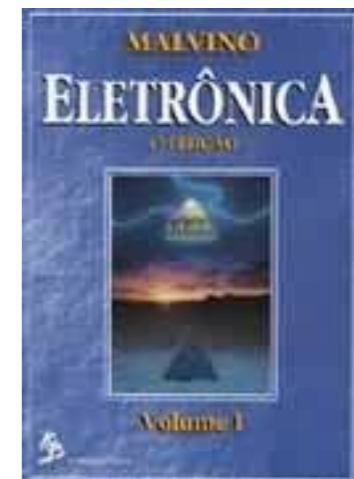
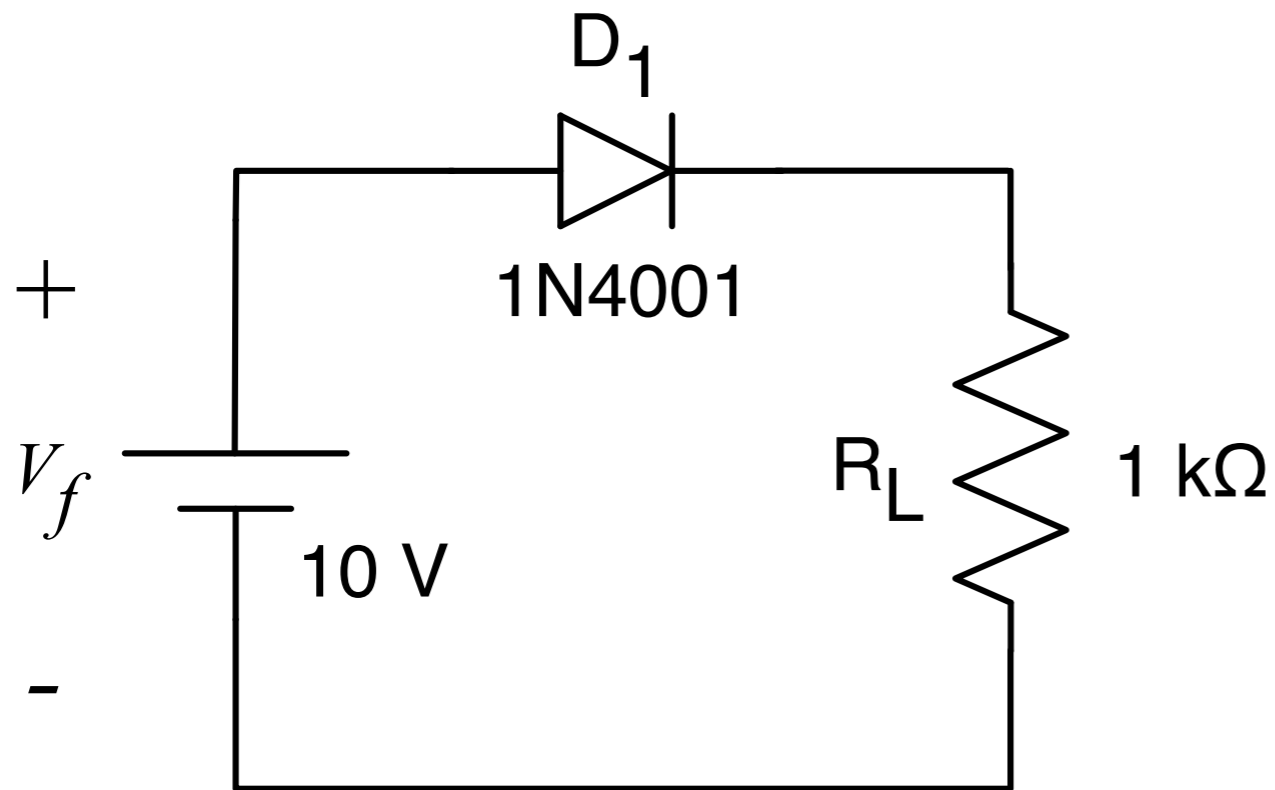


Exemplo 3.5 do Malvino.

# Modelo simplificado do diodo

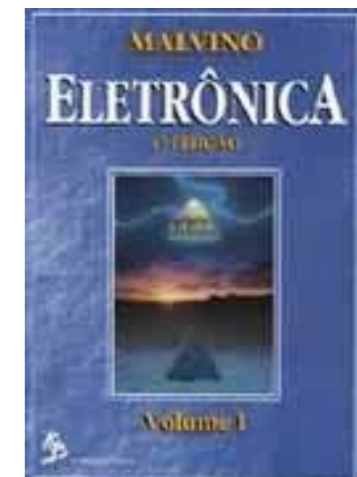
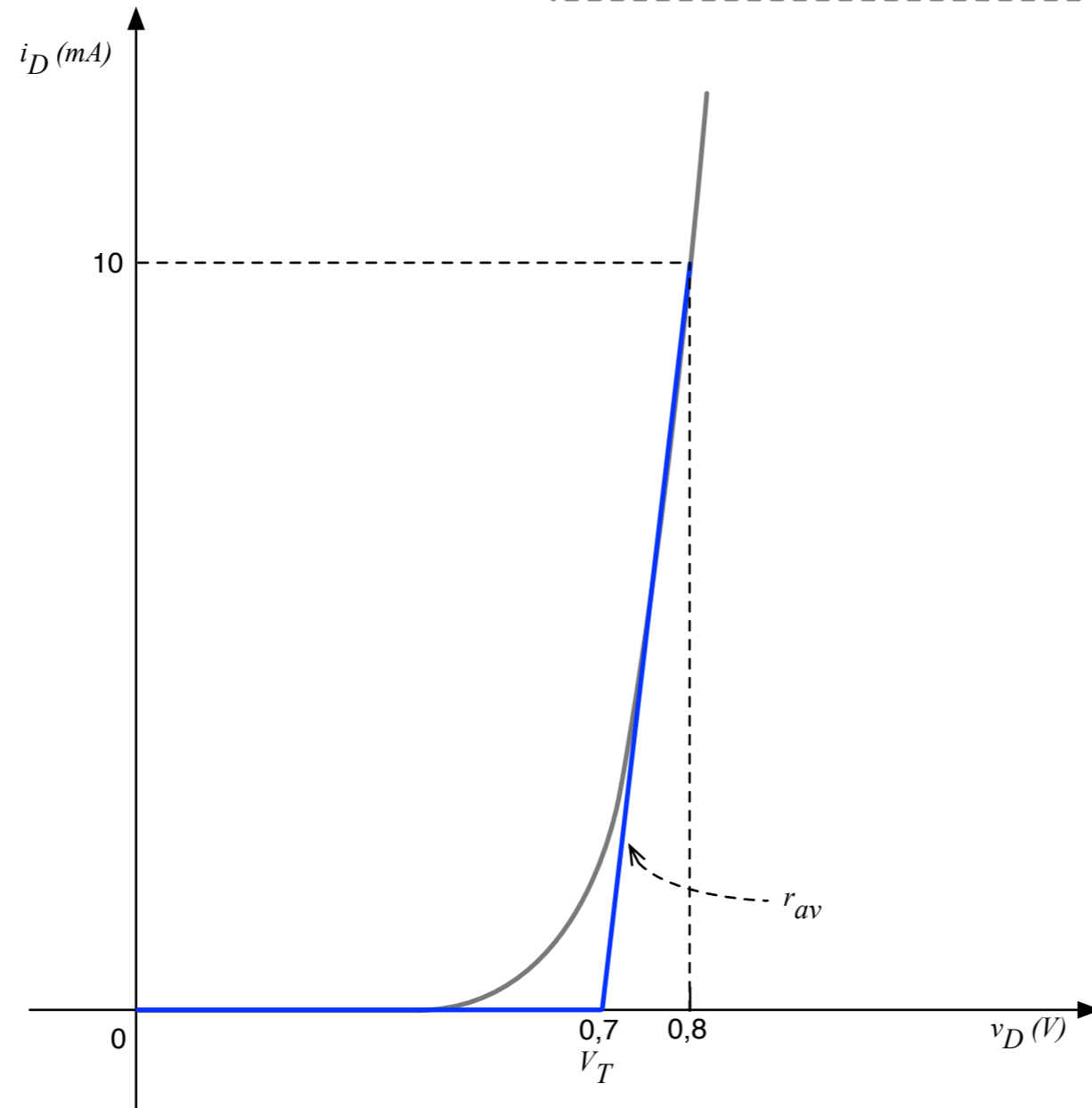
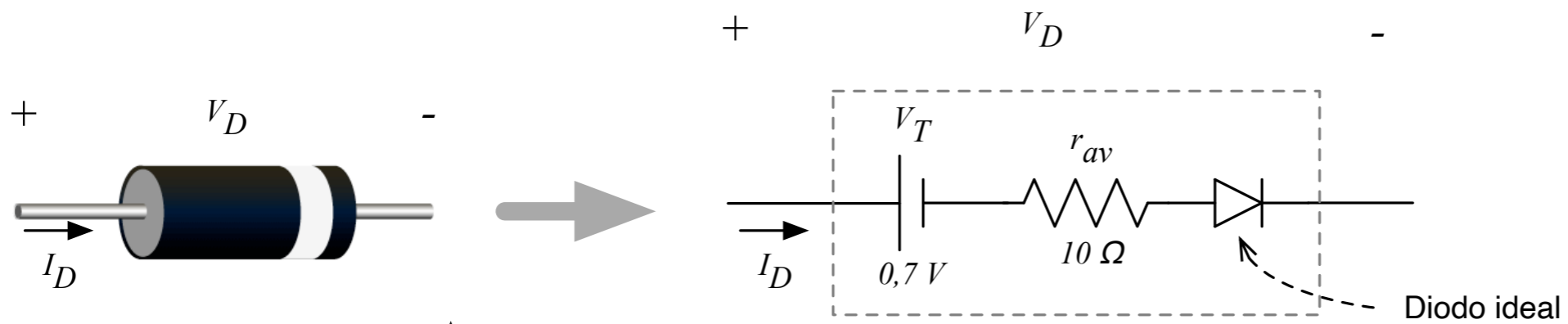
## Exemplo 3.5 - Eletrônica, vol. 1:

- Use a segunda aproximação para calcular a corrente na carga, a tensão na carga, a potência na carga, a potência no diodo e a potência total para o circuito abaixo.



Exemplo 3.5 do Malvino.

# Modelo linear do diodo

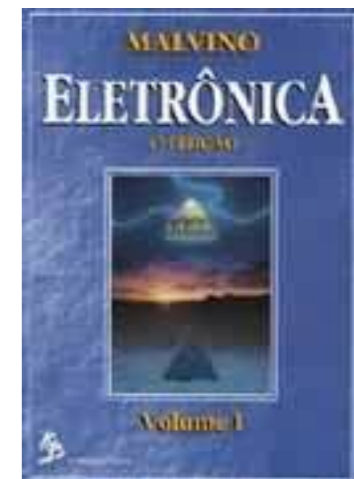
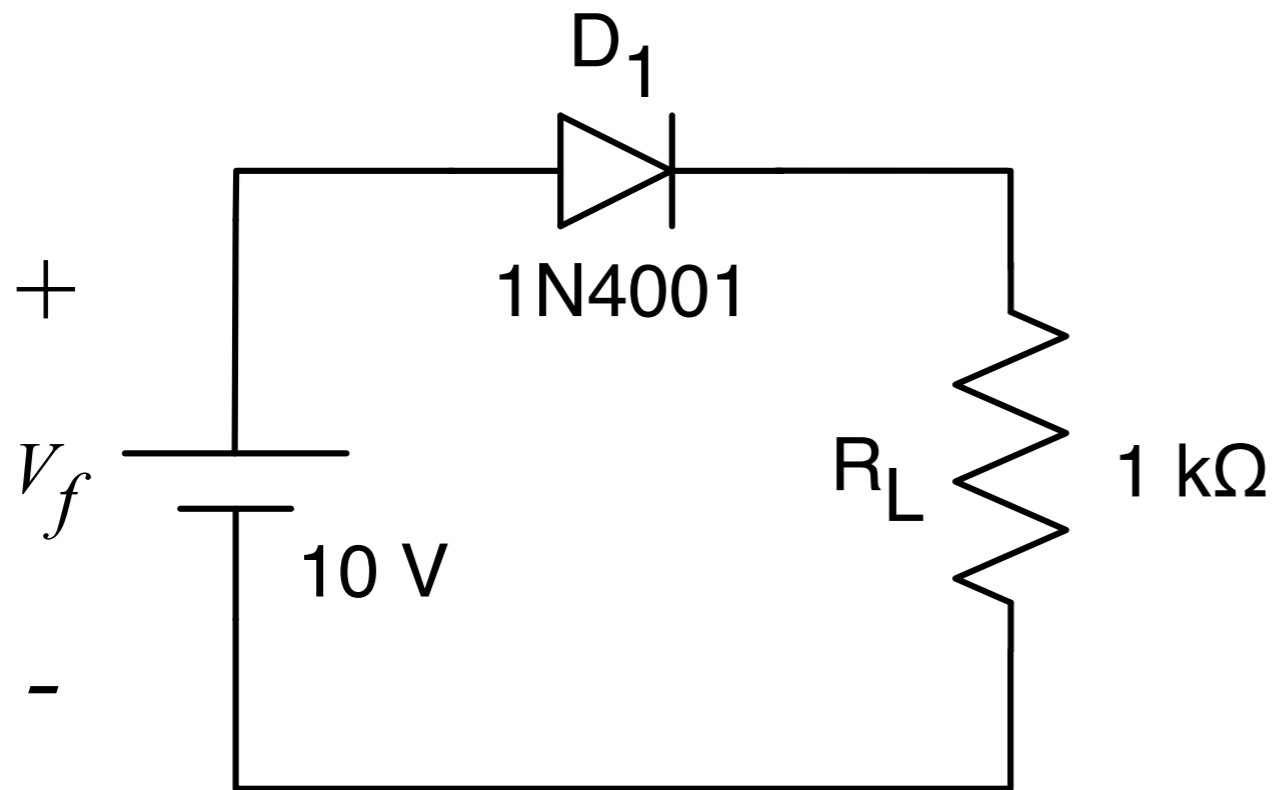


Exemplo 3.6 do Malvino.

# Modelo linear do diodo

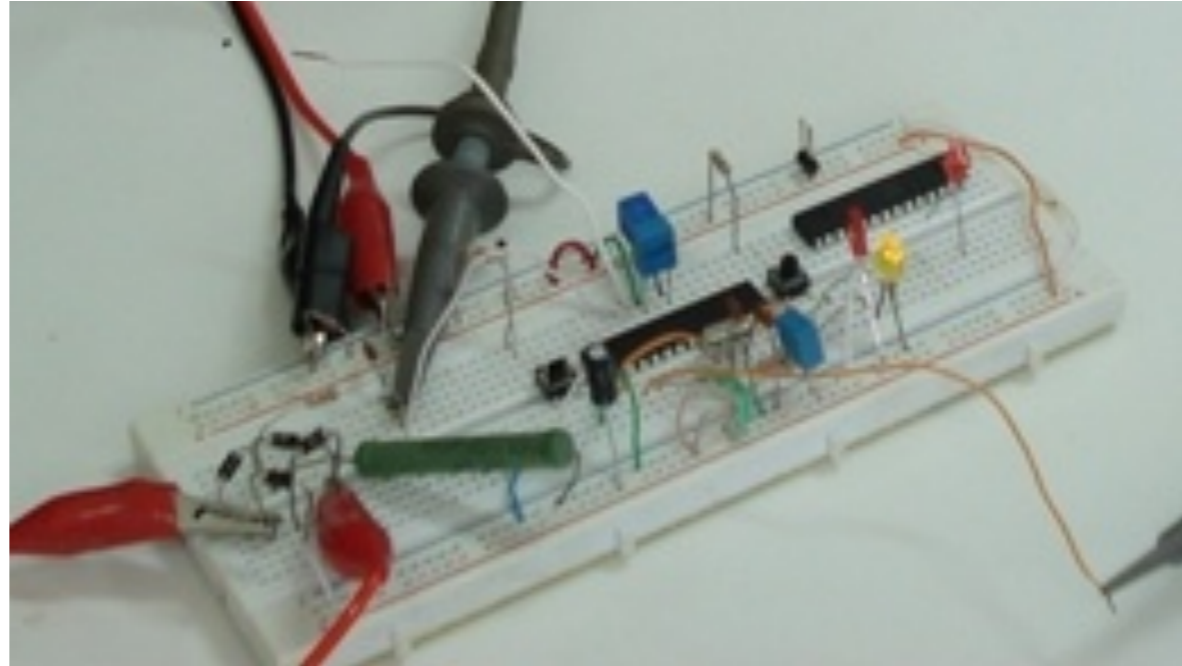
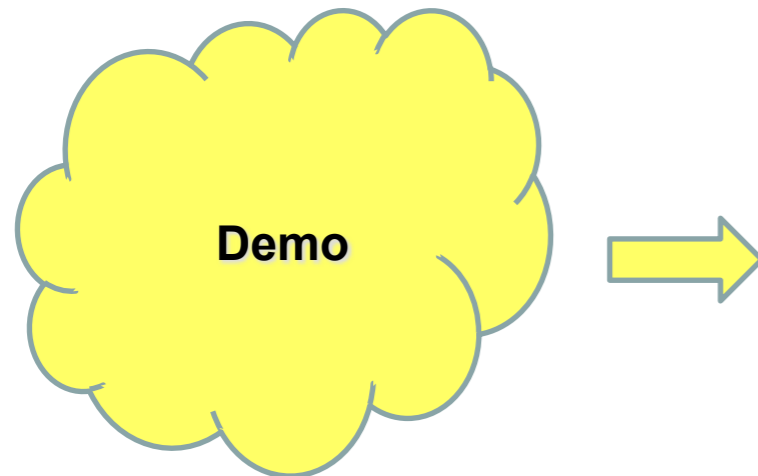
## Exemplo 3.6 - Eletrônica, vol. 1:

- Use a terceira aproximação para calcular a corrente na carga, a tensão na carga, a potência na carga, a potência no diodo e a potência total para o circuito abaixo. A resistência de corpo do diodo 1N4001 é  $0,23\Omega$ .



Exemplo 3.6 do Malvino.

# Modelo representativos de diodos



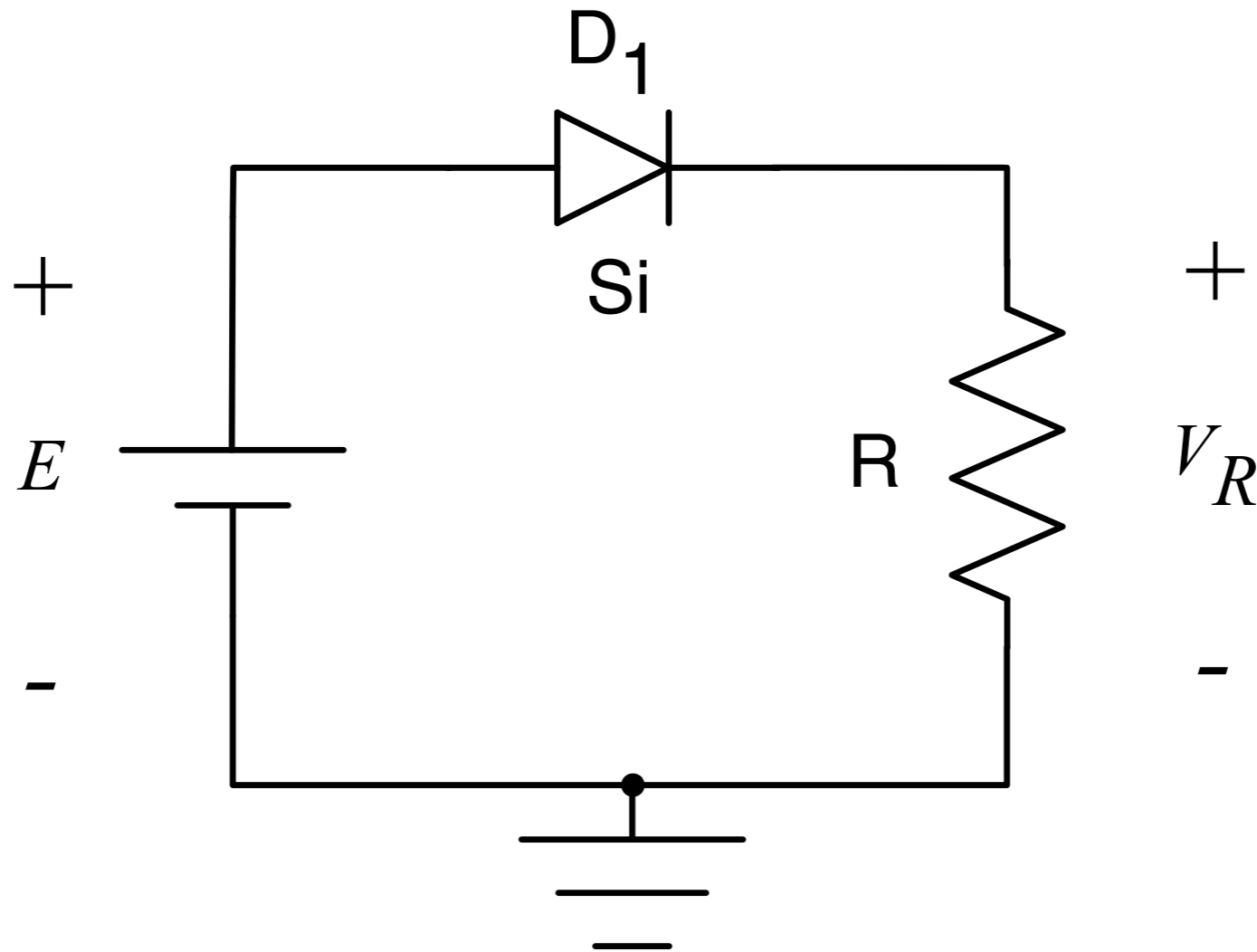
Demo:

- Circuito série com diodo.

# Circuito série de diodos

Estado de condução de um diodo:

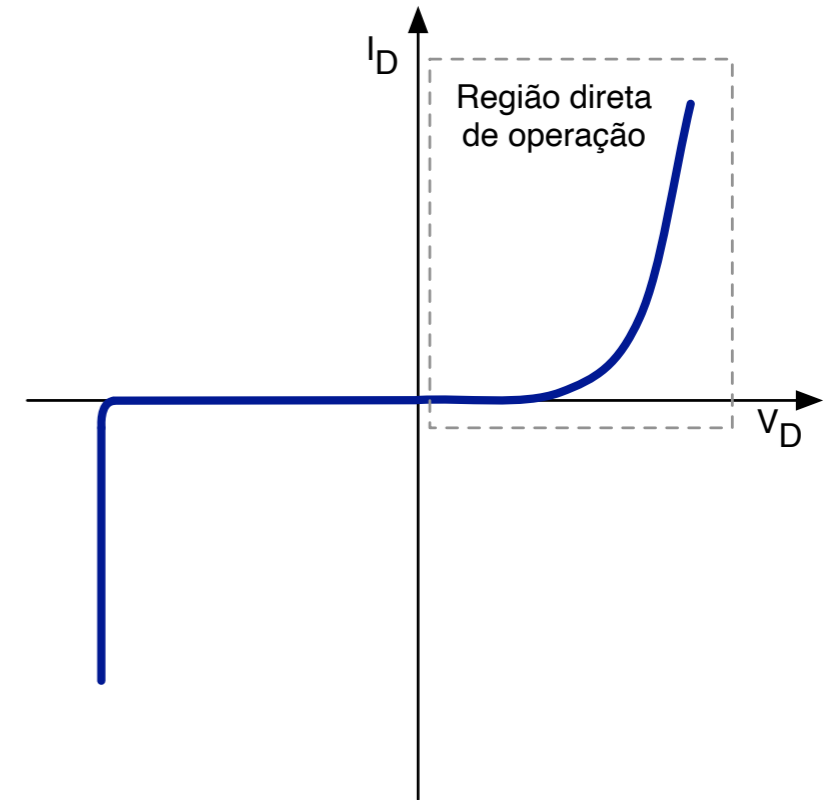
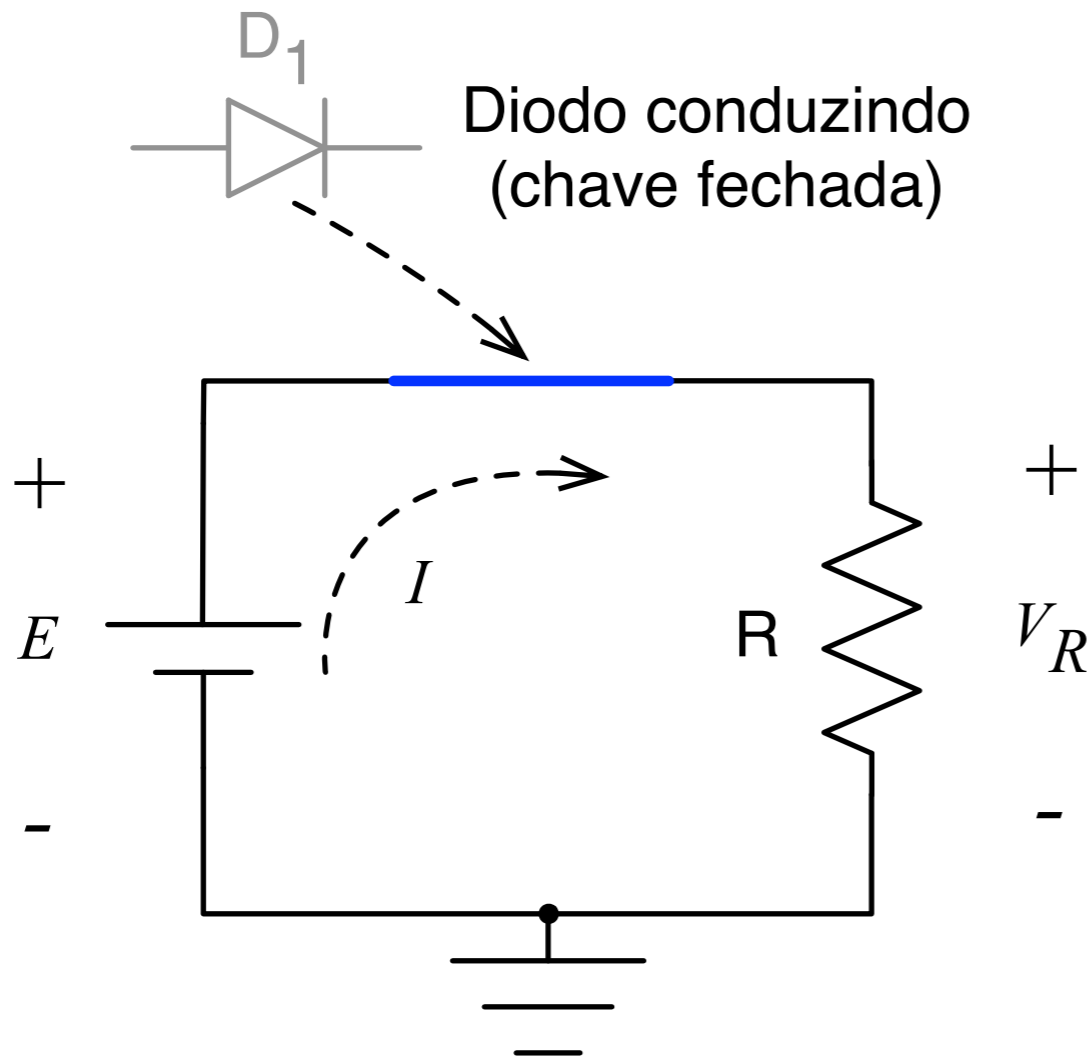
- Em geral, um diodo está no estado ligado (conduzindo) se a corrente estabelecida pelas fontes é tal que o seu sentido coincide com o da seta do símbolo do diodo.



# Circuito série de diodos

## Diodo conduzindo (on):

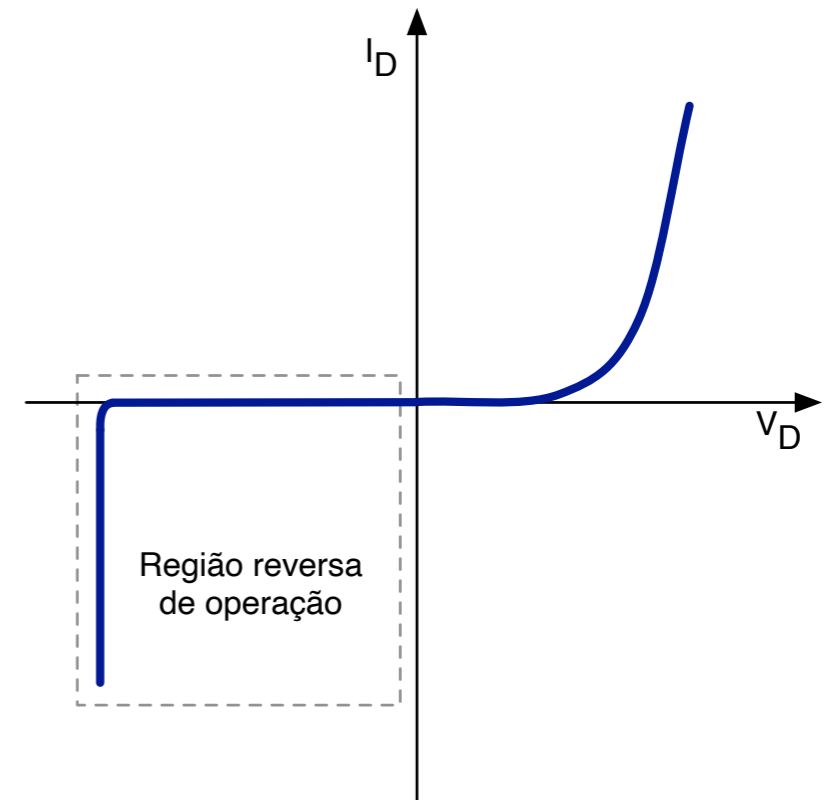
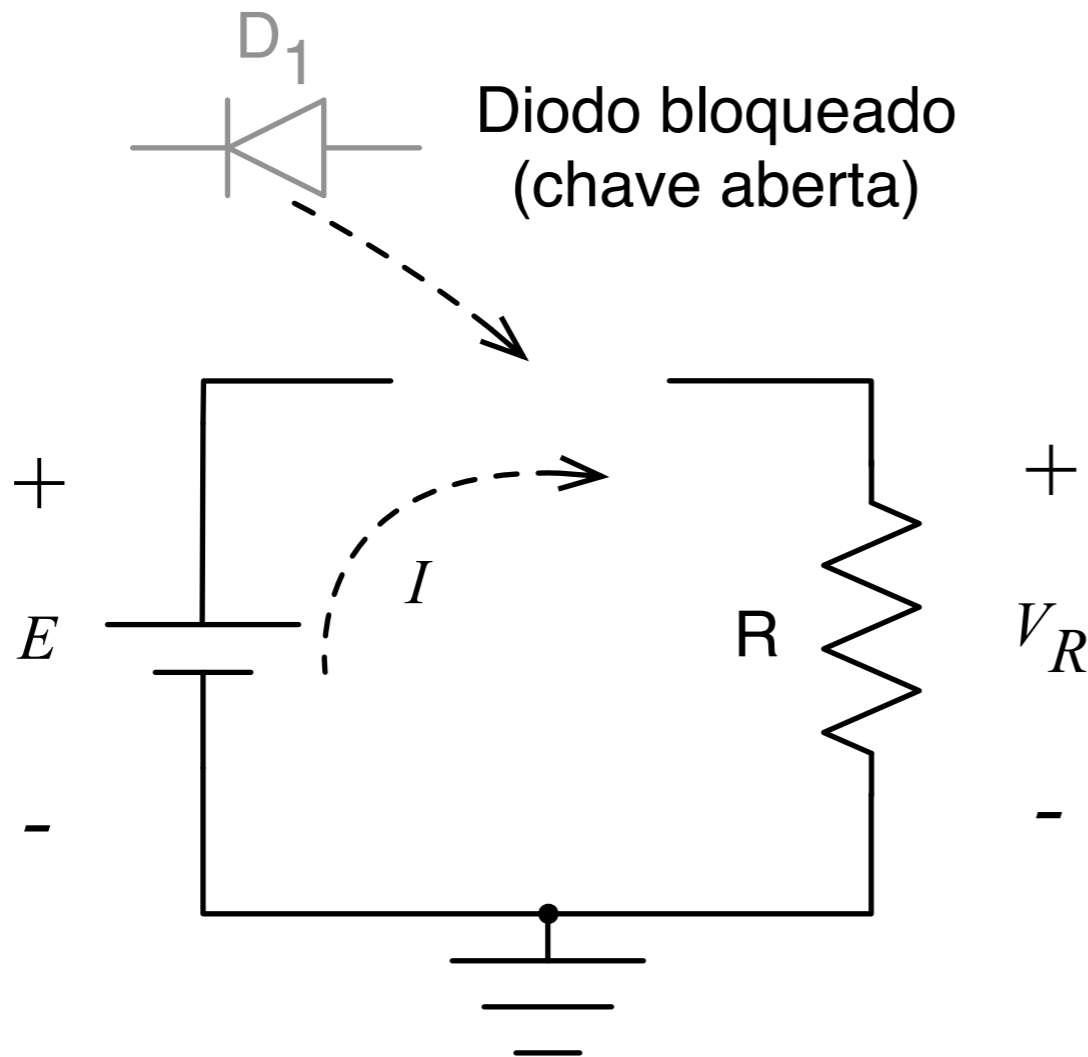
- O diodo está diretamente polarizado;
- A região de operação do diodo é a direta.



# Circuito série de diodos

## Diodo bloqueado (off):

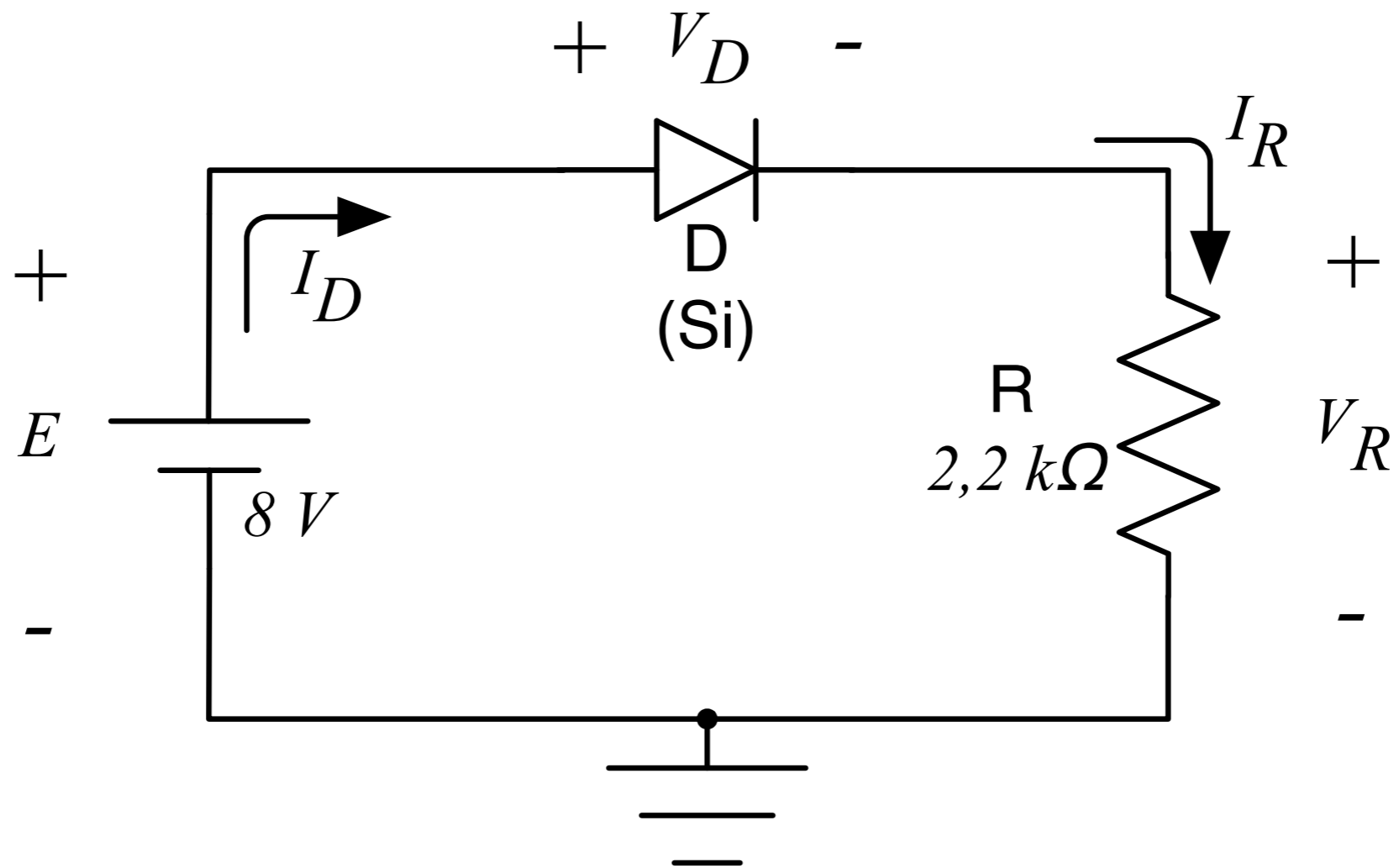
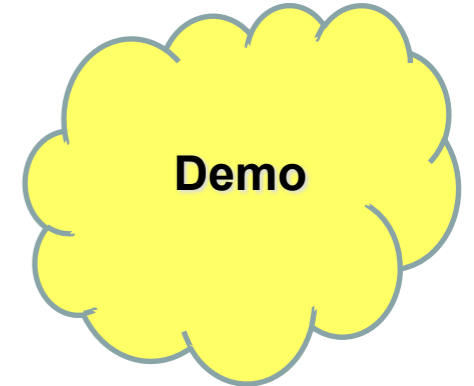
- O diodo está reversamente polarizado;
- A região de operação do diodo é a reversa.



# Circuito série de diodos

Atividade de análise de circuito com diodo:

1. O diodo está conduzindo (on) ou bloqueado (off)?
2. Determine  $V_D$ ,  $V_R$  e  $I_D$ .

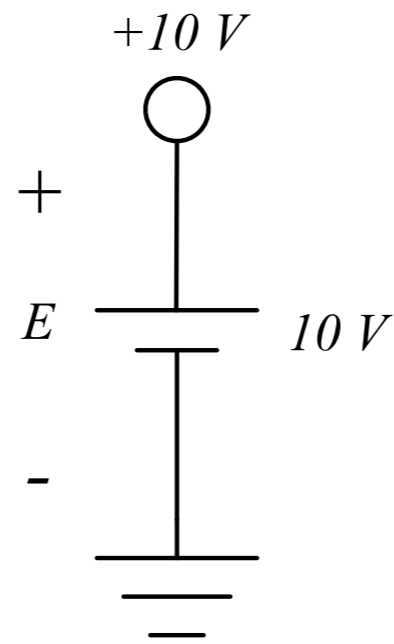
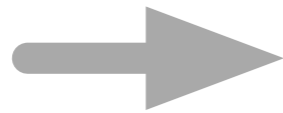


# Circuito série de diodos

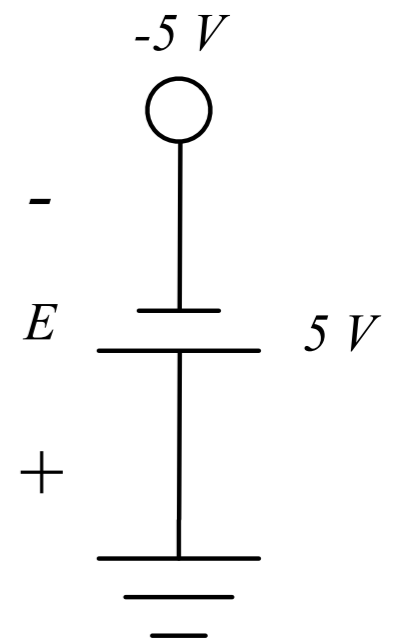
## Importante:

- Notação de fontes.

Tensão de 10 V  
positiva  
(relativa ao gnd)



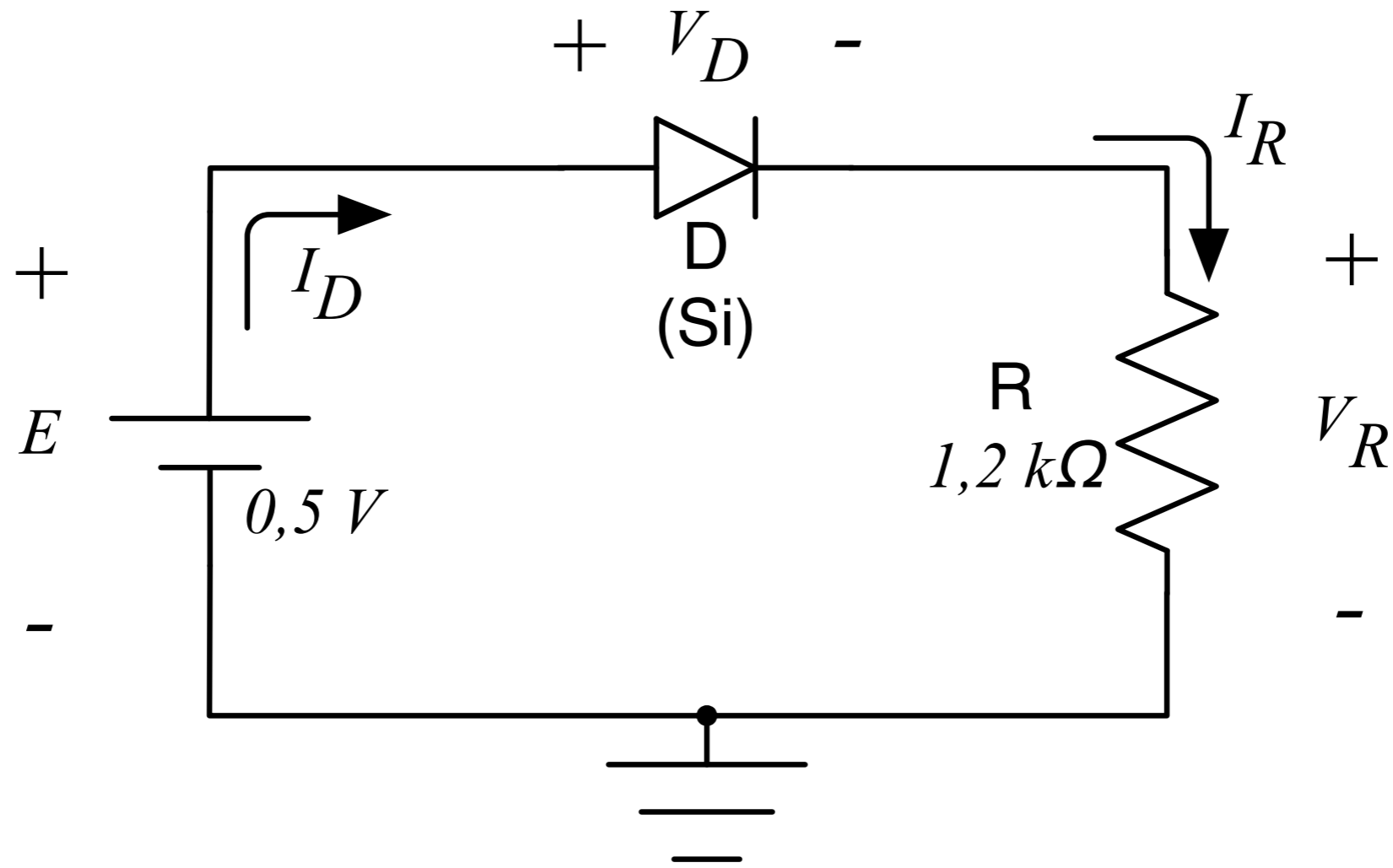
Tensão de 5 V  
negativa  
(relativa ao gnd)



# Circuito série de diodos

Atividade de análise de circuito com diodo:

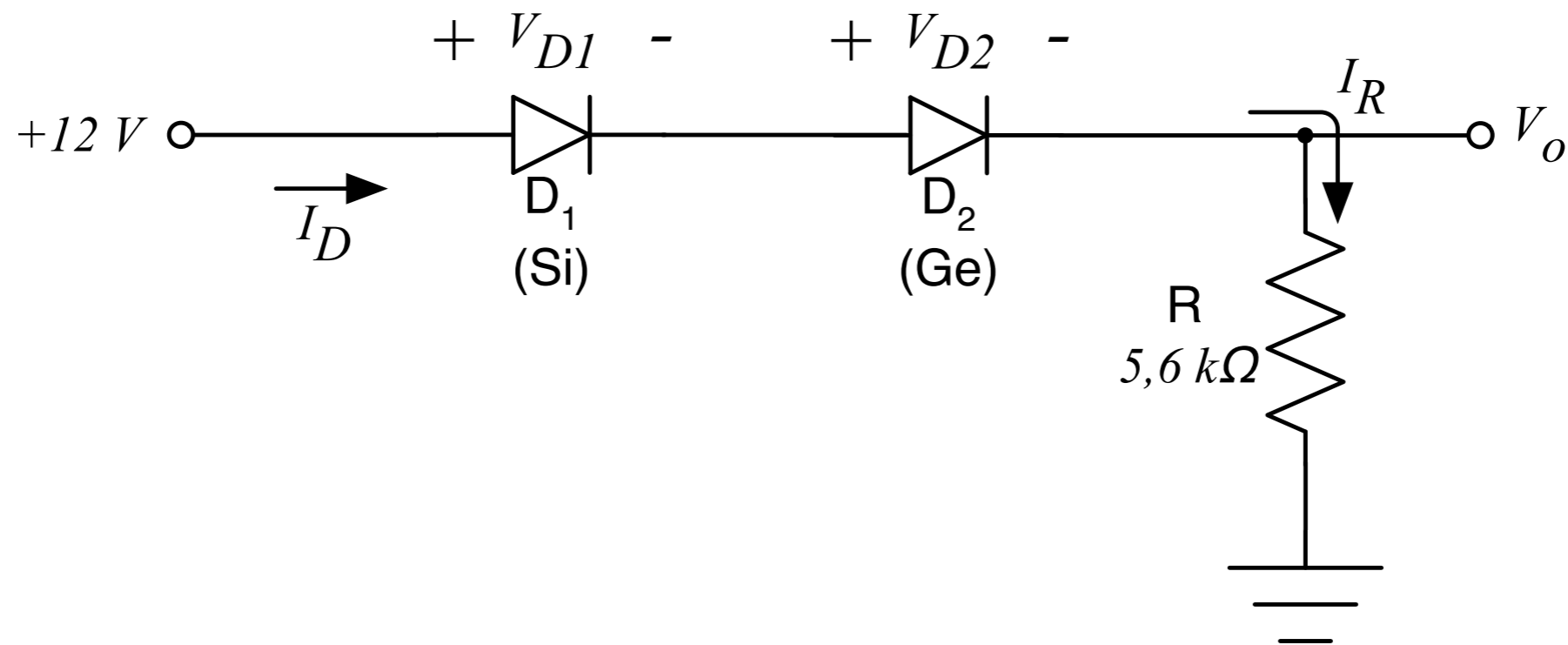
1. O diodo está conduzindo (on) ou bloqueado (off)?
2. Determine  $V_D$ ,  $V_R$  e  $I_D$ .



# Circuito série de diodos

Atividade de análise de circuito com diodo:

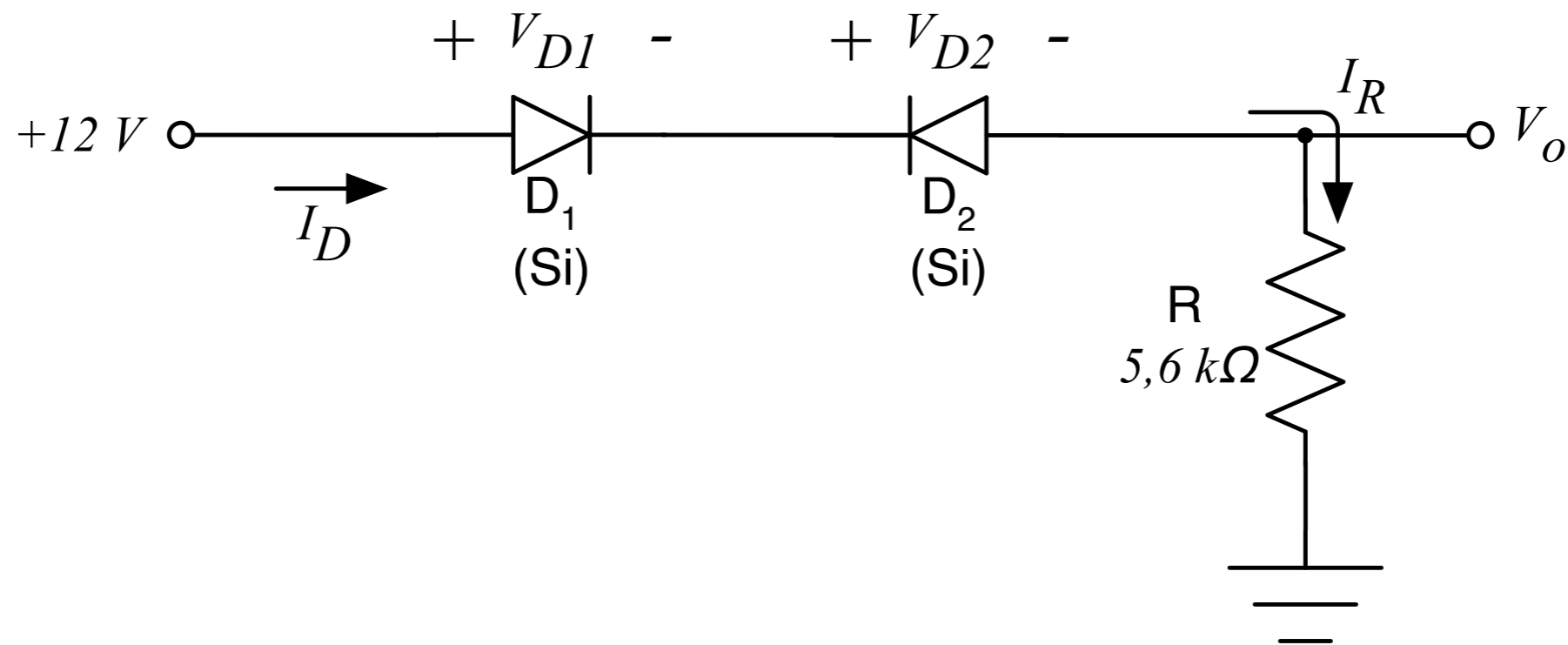
1. Quem está conduzindo (on) e quem está bloqueado (off)?
2. Determine  $V_o$ ,  $I_R$  e  $I_D$ .



# Circuito série de diodos

Atividade de análise de circuito com diodo:

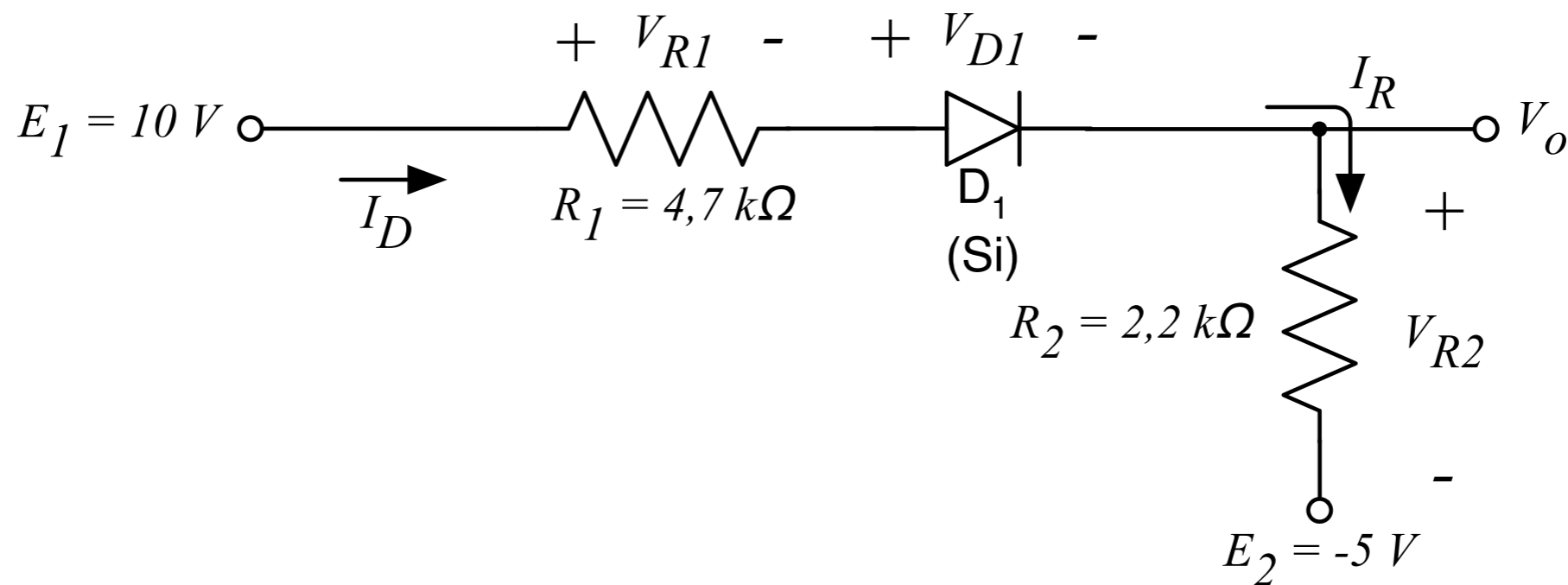
1. Quem está conduzindo (on) e quem está bloqueado (off)?
2. Determine  $V_o$ ,  $I_R$  e  $V_{D2}$ .



# Circuito série de diodos

Atividade de análise de circuito com diodo:

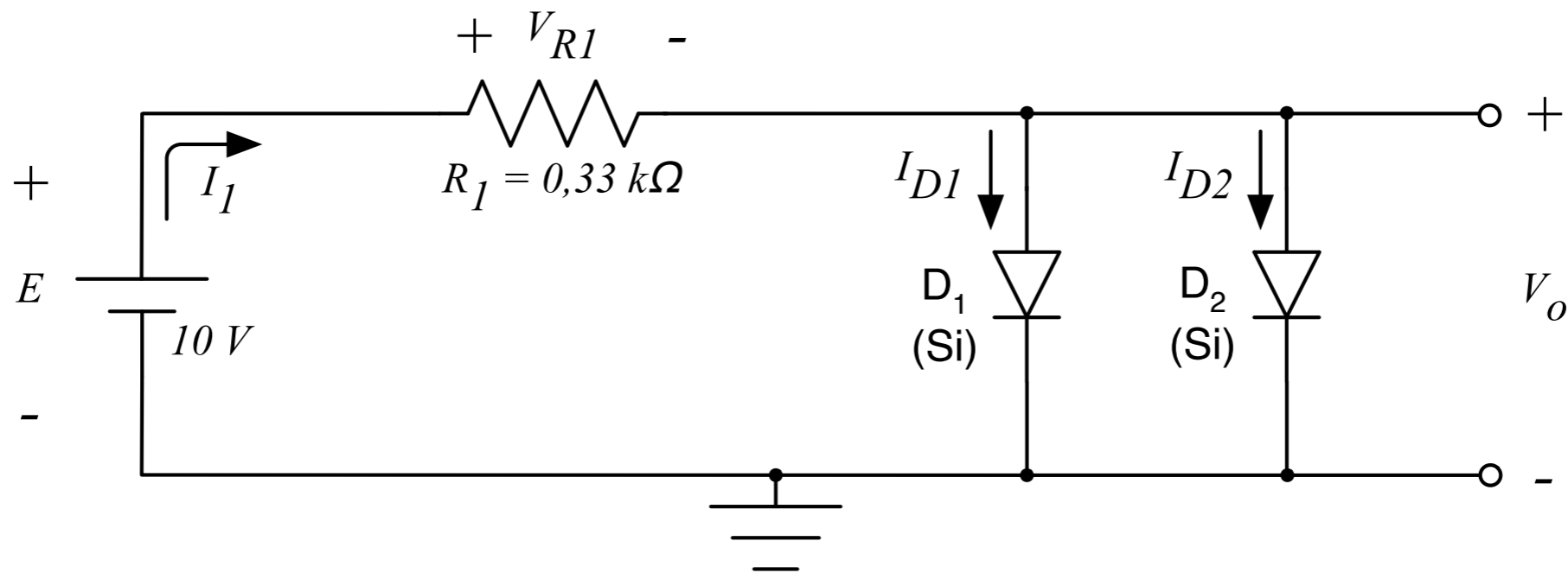
1. O diodo está conduzindo (on) ou bloqueado (off)?
2. Determine  $V_{R1}$ ,  $V_{R2}$  e  $I_D$ .



# Circuito paralelo de diodos

Atividade de análise de circuito com diodo:

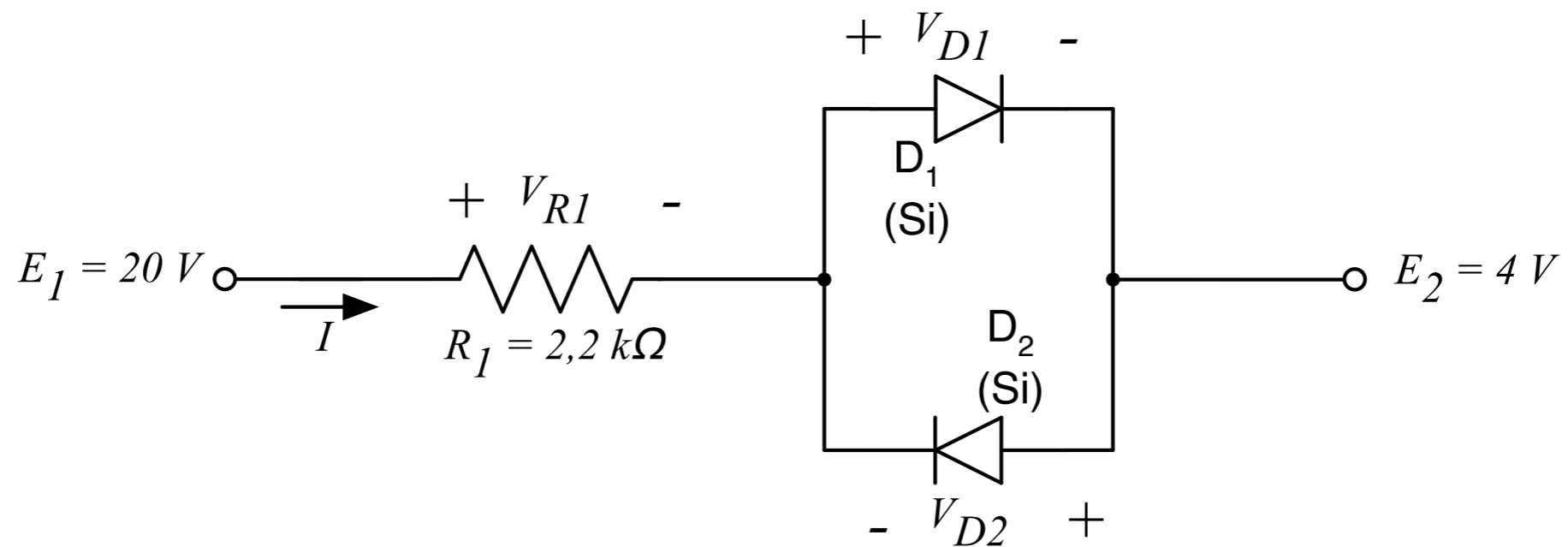
1. Quem está conduzindo (on) e quem está bloqueado (off)?
2. Determine  $V_o$ ,  $I_1$ ,  $I_{D1}$  e  $I_{D2}$ .



# Circuito paralelo de diodos

Atividade de análise de circuito com diodo:

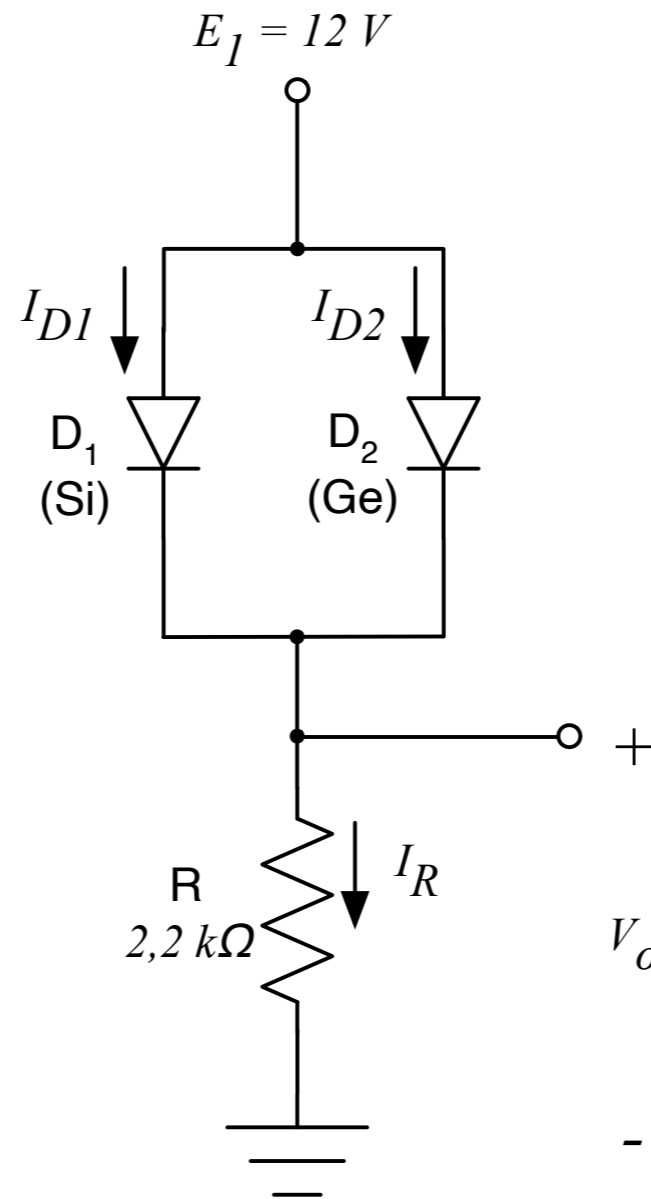
1. Quem está conduzindo (on) e quem está bloqueado (off)?
2. Determine  $V_{D1}$ ,  $V_{D2}$ ,  $I$ ,  $I_{D1}$  e  $I_{D2}$ .



# Circuito paralelo de diodos

Atividade de análise de circuito com diodo:

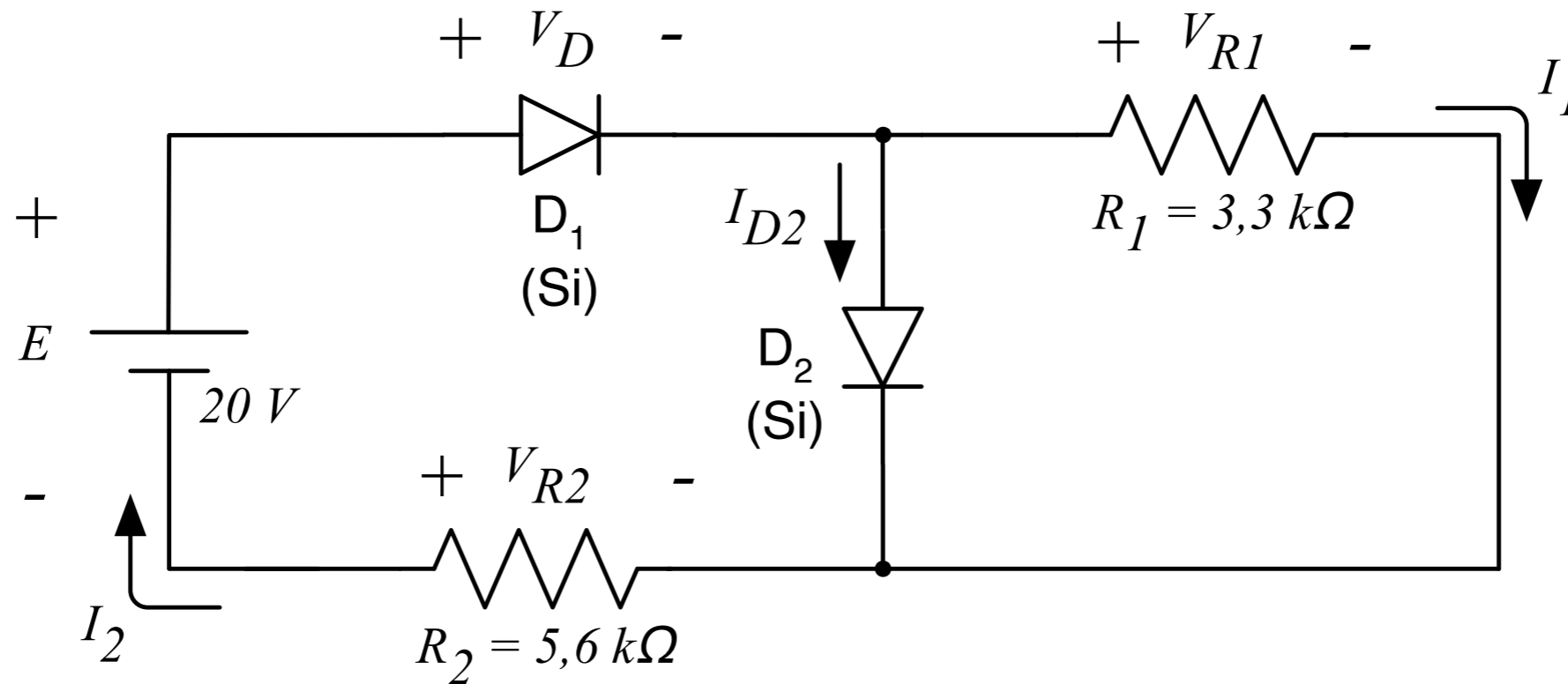
1. Quem está conduzindo (on) e quem está bloqueado (off)?
2. Determine  $V_o$ ,  $I_R$ ,  $I_{D1}$  e  $I_{D2}$ .



# Circuito paralelo de diodos

Atividade de análise de circuito com diodo:

1. Determine as correntes  $I_1$ ,  $I_2$  e  $I_{D2}$ .



# Próxima Aula

## Retificadores de meia onda e onda completa

