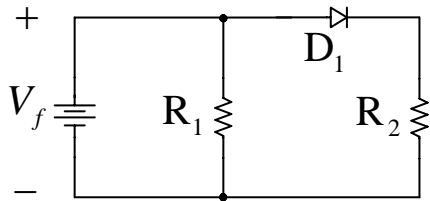


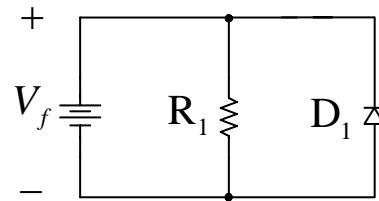
Eletrônica Básica e Projetos Eletrônicos

(1880132)

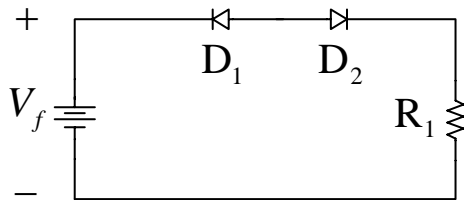
Tarefa 01: Considerando os circuitos abaixo, verifique se os diodos estão em condução ou bloqueados.



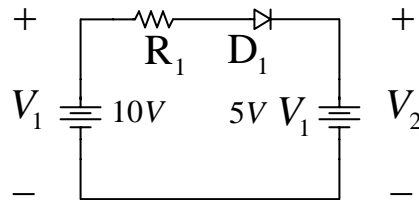
Circuito (a).



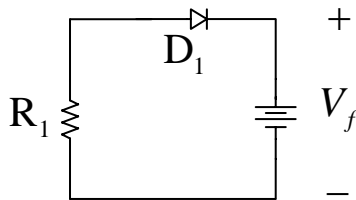
Circuito (b).



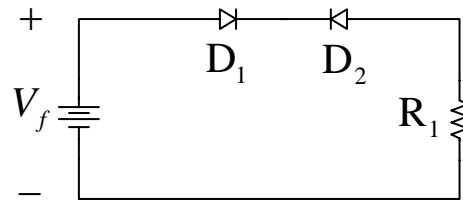
Circuito (c).



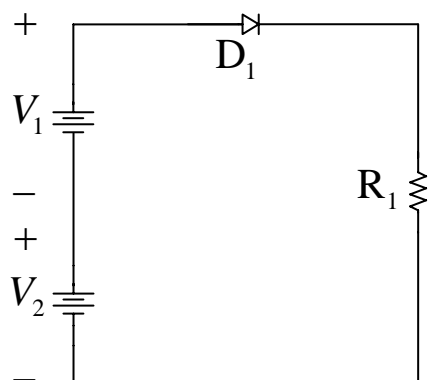
Circuito (d).



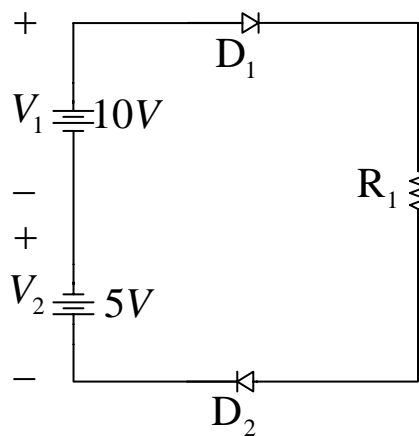
Circuito (e).



Circuito (f).



Circuito (g).



Circuito (h).